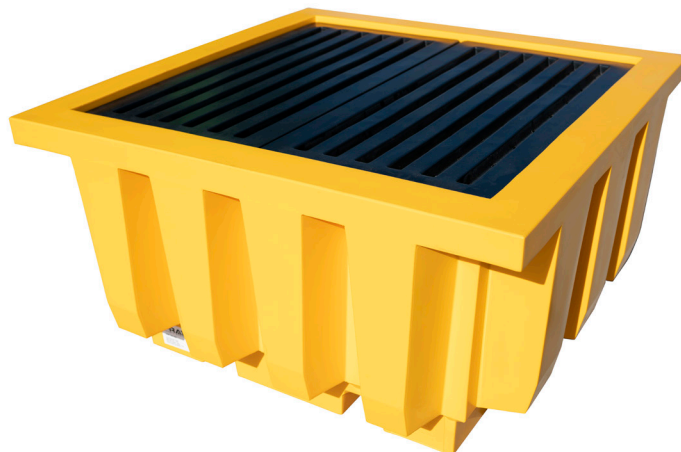


# SINGLE IBC SPILL CONTAINMENT

**INDOOR SPILL CONTAINMENT BUND PROVIDES A SAFE, CONVENIENT AND EFFECTIVE FACILITY TO STORE A SINGLE IBC CONTAINER.**

## FEATURES AND BENEFITS:

- Proudly Australian Made
- Excellent chemical resistance and will not rust or corrode
- Allows safe and convenient IBC tank handling and dispensing.
- Large capacity spill containment bund.
- 1210 x 1210mm steel reinforced deck, allows safe and convenient placement of IBC tanks.
- Accessible from either side.
- Can be lifted by forklift.
- 2" drain bung



## SPECIFICATIONS

<b>Material:</b>	UV stable Low Density Polyethylene
<b>Weight:</b>	75 kg
<b>Sump Capacity:</b>	1185 litres
<b>Forklift Access:</b>	2 Way
<b>Dimensions:</b>	Height 800mm Width 1470mm Depth 1470mm Storage 1 x 1000L IBC unit

## INSTRUCTIONS

1. Ensure stored liquids are chemically compatible with polyethylene plastic.
2. Ensure any liquids in sump are removed promptly.
3. Ensure payload does not exceed maximum UDL.
4. Ensure largest container volume does not exceed sump capacity.